



Diversity and Ethics

Soft Skills Training Workshop

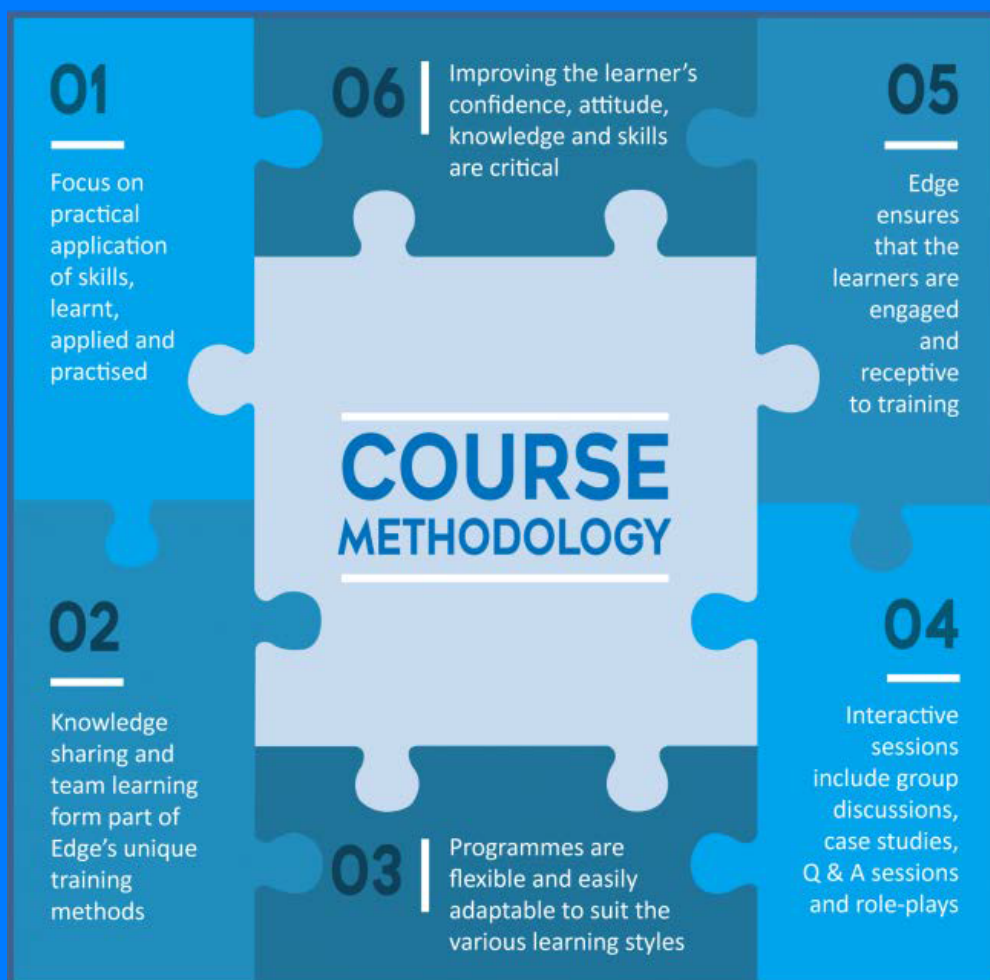
OK, WE'RE NOT THE SAME

Workshop Outline

- What is diversity?
- Assess diversity within an organisation
- Identify personal diversity
- Compare important days/festivals/occasions
- Define the word assumption
- Consider the dangers of making assumptions
- Recognise what is different about you
- Analyse the difference in intercultural communication
- Develop Intercultural teams
- Understand team norms and guidelines
- Recognise stereotypes
- Acknowledge your own stereotypical behaviour

Objective

By the end of this course you will have developed your own definition of diversity and will have clearly identified and understood the different ways in which we are all diverse. You will understand and recognise the affect making assumptions and stereotyping can have on our lives and will round off the course with comparing intercultural communication and discussing how we can use this information to create successful teams.



About Edge Training

With over 22 years of Human Development training experience, Edge Training has a Level 1 BBBEE Scorecard, a National Footprint and Full Accreditation with Services SETA. Together with our BEE partners, we are committed to solving BEE related Skills Development Challenges in a meaningful way. Whether an Accredited Short Course, a Behaviour Changing Workshop or a Learnership, our highly skilled and dedicated team can offer you a solution. We source the learners and manage all the necessary requirements for disabled and unemployed Learnerships. Most of our Learnerships and Workshops are also offered as online courses.

Get in Touch

☎ 087 135 5543 🌐 www.edgetraining.co.za ✉ info@edgetraining.co.za